



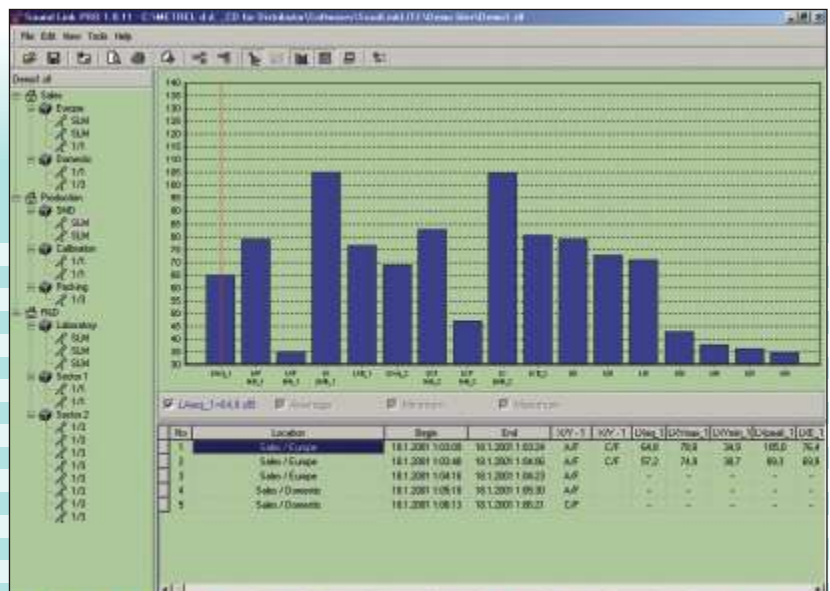
FonS

Completely digitalised Class 1 (Pro Set) or Class 2 (Euro Set) sound level meter with two independent measuring channels compliant with IEC 61672 standard. Each channel can be set to a different time and frequency weighting. FonS is also a real-time octave and one third octave frequency analyser compliant with IEC 61260 standard. It operates in two modes: an on-line reading mode which displays current measurement and in a logger mode, which automatically stores all measurement values per logging interval.

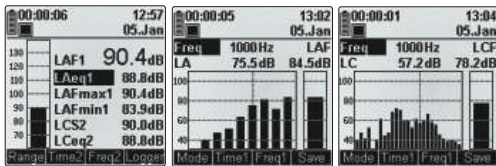
- The measurement functions (where letter X stands for A, C or Z frequency weighting, Y for fast, slow or impulse time weighting applicable to both first and second measuring channels) are:
 - LXY, a time weighted sound level;
 - LXeq, a time average sound level, or equivalent continuous sound level;
 - LXYmax, a maximum time weighted sound level;
 - LXYmin, a minimum time weighted sound level;
 - LXpeak, a peak sound level;
 - LXE, a sound exposure level;
 - L%, a percentile sound pressure level (only first channel)
- A windscreen and a sound shield facilitate the outdoor measurements by reducing the wind noise and/or give a protection against the dust or other small particles often found in the air of harsh industrial environments.
- PC software SoundLink LITE is used to download, review and export data to other spreadsheet software applications. Optional frequency analysis PC software SoundLink PRO enables data analysis, charting and reporting.

Technical Specification

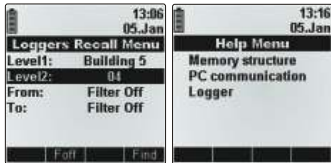
Communication:	RS 232 serial interface for connection to a PC, fully opto isolated, 57600 baud, 9 pin D-type connector.
Memory:	approximately 4000 values
Logger:	approximately 4000 values
Dimensions (WxHxL):	110 x 85 x 220 mm
Weight:	0.56 kg (without batteries)
Battery:	6 x 1.2 V AA rechargeable, with internal charger
Display:	graphical LCD with backlight, 160 x 160 dots
Pollution degree:	2
Protection degree:	IP 42



Sample of on-line reading data analysis with SoundLink PRO PC software.



Sound level measurement, 1/1 and 1/3 octave analysis.



Recalling of memory, sample of help menu.



Logged data analysis with SoundLink PRO PC software.

Ordering information

Euro Set Part No. MI 6301 EU



- Instrument FonS
- Class 2 sound probe (A 1151)
- Windscreen
- Plastic shield
- Carrying case
- PC software SoundLink LITE
- with RS232 cable
- Power supply adapter + 6 NiMH batteries
- Tripod adapter
- Instruction manual
- ISO calibration certificate for complete system

Pro Set Part No. MI 6301 PR

- Euro Set
- Class 1 sound probe A 1146 instead of Class 2 sound probe A 1151.

Optional accessories



- A 1159 - Tripod
- A 1160 - Fast cell charger with a set of 6 pcs NiMH AA batteries, 100-240 V AC cable and 12 V DC cable
- A 1152 - Sound calibrator Class 1
- A 1165 - Sound calibrator Class 2
- A 1162 - SoundLink PRO PC software